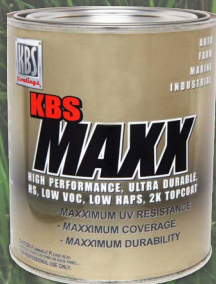




RUST STOPS HERE.
2019 Vol.1



RUST PREVENTION



1K, 2K & AEROSOL TOPCOATS



UNDERCOATINGS

KBS Coatings was founded in the heartland of America by key personnel having collectively over 85 years of experience in coatings formulation, manufacturing & distribution, and have combined this unparalleled experience and comprehensive capabilities in addressing the coatings requirements across all industries. With our commitment to research, ability to evolve and innovate, high tech manufacturing, and revolutionary rust stopping products, KBS Coatings continues to gain popularity and is quickly becoming the standard by which all other rust coatings are judged. Outstanding products manufactured in the USA offering permanent results have placed KBS Coatings at the forefront of rust prevention solutions for literally thousands of different types of applications world-wide.

THE KBS 3 STEP SYSTEM

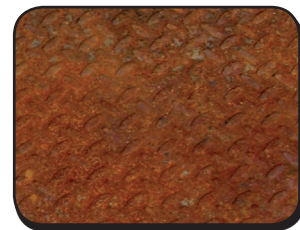
Q – I'm getting ready to seal some rusted bare metal as well as some brand new metal using **RustSeal**. Is the cleaning & prepping with **KBS Klean & RustBlast** really necessary? It seems like a lot of work.

A – We're sure you've painted things that have survived the lack of prep before, but in reality the finished result would have been much longer lasting had you prepped smart. The two proven key components for long-term rust coating performance are:

- 1) Proper Metal Surface Preparation, which includes cleaning and etching.
- 2) Permanent Separation of Moisture & Oxygen from the Metal

Newly sandblasted surfaces require no prep other than blowing off loose dust & are the ideal choice for direct **RustSeal** application. Otherwise, the presence of corrosion & organic contamination will block & inhibit **RustSeal** or any coating from deeply penetrating & permanently adhering to the surface. Slight residues of grease, oil or fingerprints can ruin any good paint job. Even brand new metals have protective oils applied which will interfere with adhesion.

Our all inclusive **Klean/Blast/Seal 3-Step System** is specifically formulated to ensure good prep, adhesion & finish. Simply put...the cleaner the surface gets using **KBS Klean**, the more effective **RustBlast** will work and the deeper the **RustSeal** will penetrate into the open pores, to even out texture and permanently seal & protect the surface.



INDEX

3 Step System	2	Motor Coater	14
KBS Klean	3	XTC - Xtreme Temperature Coating	15
RustBlast	3	Tank Sealer	16
RustSeal	4-5	Tank Sealer Kits	17
Rust Prevention Kits	6-7	KBS Strip	18
Cavity Coater	8	NuMetal Epoxy Putty	18
Fusion Self-Etch Primer	8	KBS Bed Renu / KBS Bed Liner	19
BlackTop	9	KBS Patch	19
KBS MAXX	10	KBS Paint Saver	20
KBS Top Coater	11	KBS Rust Converter	20
DiamondFinish Clear	12	Disposable Gloves	21
KBS UnderCoat	13	Accessories	22

SATISFACTION GUARANTEED OR YOUR MONEY BACK!

Quite simply, if one follows application instructions & applies proper mil thickness, and you don't believe our products perform just as well if not better than the products you are currently using, we will refund your product purchase.



STEP #1 KBS KLEAN

POWERFUL CLEANER/DEGREASER

KBS Klean is the critical first step in surface cleaning and meets the requirements to ensure that all contaminants have been eliminated from the surface. **KBS Klean** is a concentrated, water-based, biodegradable formula that is an excellent alternative to flammable solvents & hazardous chemicals for preparing your paint job with a clean surface. **KBS Klean** is water-based and can be diluted up to 10x it's volume.

8oz: \$6.95
 Quart: \$12.95
 Gallon: \$22.95
 5 Gal Pail: \$99.95

Perfect for the home, garage, shop or plant to effectively remove dirt, grime, oils, lubricants, grease, waxes, scum, algae, road film and other contaminants.

Satisfaction Guaranteed!



APPLICATIONS:

Steel • Iron • Fiberglass • Concrete • Plastics
 Painted Finishes • Galvanized • Aluminum
 Stainless Steel • Canvas • Vinyl • Nylon • Brass
 Automotive & Diesel Engines • Machinery Parts
 Car Frames • Heavy Construction Equipment
 Truck Trailers • Compressors • Holding Tanks
 Engine Room Equipment • Air Conditioner Systems
 Grease Traps • Floor Pans • Fuel Tanks
 Transmissions • Porcelain Sinks • Tubs • Asphalt
 Lawn Mowers • Tools • Ovens • BBQ Grills • Toilets & more!

FEATURES:

- ▶ Guaranteed pre-paint performance
- ▶ Economical concentrated formula
- ▶ Low foaming, leaves no residue
- ▶ Non-flammable, no petroleum additives
- ▶ Non-corrosive, non-toxic
- ▶ Environmentally safe, phosphate-free
- ▶ Safe on non-ferrous metals like aluminum
- ▶ Powerful low temp cleaning action

STEP #2 RUST BLAST

RUST REMOVER & PRE-PRIMING ETCH

Easy-to-use spray, submerge or brush application. Apply **RustBlast** full strength to a clean surface keeping it wet for 30-40 minutes or longer and watch rust, corrosion, metal oxides, and tarnishing vanish before your eyes!

8oz: \$7.95
 Quart: \$17.95
 Gallon: \$33.95
 5 Gal Pail: \$154.95

RustBlast will acid etch the surface and leave a zinc phosphate coating to ensure additional rust protection & a strong bond with any paint. Satisfaction Guaranteed!



APPLICATIONS:

Steel • Cast Iron • Brass • Aluminum
 Galvanized • Copper • Steel Alloys
 Fiberglass • Metal Casings
 Other Non-Metallic Surfaces • Concrete
 Rust Removal • Metal Etching
 Mill Scale Removal
 Pre-Paint Surface Treatment

FEATURES:

- ▶ Removes & neutralizes rust
- ▶ Pre-paint primer & metal prep
- ▶ Provides etched surface profile for solid adhesion
- ▶ Leaves a zinc phosphate base coating
- ▶ Enhances welding conductivity
- ▶ Non-flammable, no petroleum additives
- ▶ Non-corrosive
- ▶ Water-based, biodegradable

STEP #3 RUST SEAL

View Instructional Videos at KBS-COATINGS.COM

RUST PREVENTIVE COATING

RustSeal is an incredibly durable, single-component, ready-to-use, high solids content, rust preventive, non-porous coating with exceptional sealing properties. No other brand is tougher on rust!

RustSeal works by isolating the surface from moisture and oxygen, the ultimate causes of rust & corrosion.

RustSeal is the most cost-effective permanent solution for stopping rust & corrosion wherever it is a problem: automotive, industry, fleet, farm & more! It's technology that's unbeatable! **SATISFACTION GUARANTEED!**

- 8oz (*12 sq.ft.): **\$18.95**
 - Pint (*25 sq.ft.): **\$29.95**
 - Quart (*50 sq.ft.): **\$41.95**
 - Gallon (*200 sq.ft.): **\$139.95**
 - 5 Gal Pail: **\$574.95**
- *Coverages based on 2 coats

- APPLICATIONS:**
- Automotive: Chassis • Floor Pans
Wheel Wells • Fenders • Trunks • Engines
Suspension Parts • Axles • Roof Drains
Springs • Doors • Almost Every Part on a car except the exhaust!
- Marine: Engine Rooms • Hulls • Masts
Bilges • Heat Exchangers • Decks • Pumps
Chain Lockers • Fuel Tanks • Boat Trailers
- Industrial: Heavy Transport • Steam Pipes
Sealing Concrete • Air Conditioning Repair
Fiberglass Repair • Rebar Coating • Steel Roof
Fuel & Waste-Water Treatment Tanks
- Other Uses: Hand Rails • Support Beams
Lawn Equipment • Garage Floors
Pipe Work • Appliances
Lead-Based Paint Encapsulation



- GLOSS BLACK**
A strikingly rich black finish with a long lasting wet shine! A popular choice used in all automotive restoration applications including frames & chassis.
- SATIN BLACK**
A rich vibrant black coating that has a low luster uniform sheen which compares to OEM finishes! The perfect color used by those wanting an "original look" of a rock hard chassis semi-gloss finish.
- SILVER**
A rock hard silver metallic finish made for superior workplace protection. A perfect coating that can be used for reproducing the look & appearance of "bare steel!"
- GREY**
A medium grey colored coating that cures to a smooth diamond hard finish! Ideal for sealing & protecting steel, concrete, cinder blocks, warehouse floors, plywood and more!
- OXIDE RED**
A deep glossy red coating with high hide & coverage properties required for use in many types of industrial applications.
- GREEN**
A rich glossy green coating enhanced with high levels of micronized corrosion barrier pigments used for their high hide & coverage abilities.
- OFF-WHITE**
The toughest white metal primer you'll ever use! Perfect color associated primer choice for all light colored topcoats.
- CAT YELLOW**
A full spec industrial yellow with micronized corrosion barrier pigments in a color well recognized on any work site as Cat Yellow.
- SAFETY BLUE**
A full spec industrial safety blue with micronized corrosion barrier pigments in a brilliant safety blue color.
- GALVANIZED STEEL**
We've replicated the look of an industrial galvanized matte finish with this super tough color of RustSeal.

RUSTSEAL FEATURES

- ▶ High surface tolerance for many different types of applications
- ▶ Apply directly over treated rust
- ▶ Single component formula
- ▶ High solids content
- ▶ Widest array of **TEN** non-porous color formulas
- ▶ Combines with atmospheric moisture to cure
- ▶ Excellent surface penetration & adhesion
- ▶ Forms permanent non-porous barrier against moisture & oxygen
- ▶ Waterproof coating strengthened by repeated exposure to moisture
- ▶ Mold & mildew resistant
- ▶ High abrasion & chemical resistance
- ▶ Repels fuels, oils, most acids & alkalis, & graffiti
- ▶ Won't crack, flake or peel
- ▶ Withstands temps up to 600°F (316°C)
- ▶ Brush, roll or spray application
- ▶ Superior flow & leveling
- ▶ Flexible coating allowing expansion & contraction
- ▶ Compatible with all paint systems
- ▶ VOC compliant & Lead-free

"This stuff is hard as a rock and also gives the vehicle that brand new look. It's nice to have a product that will protect and always look good when showing the car. Thanks"

- Dennis V from Mid Michigan



4PAK CONVENIENCE QUART

A full quart (32oz) of RustSeal in four user-friendly 8oz. cans. Each can provides 2 coats of coverage for an approx. 12 sq. ft. area. Open only what you need. **Best value** for small or multiple projects. **Mix or match colors.**

4PAK Convenience Quart: **\$64.95**



CONVENIENCE GALLON

Buy four quarts of RustSeal to maximize your savings and avoid waste. Best buy for multiple larger size projects. Each RustSeal quart provides 2 coats of coverage for an approx. 50 sq. ft. area. Mix or match colors.

4 Quarts (*50 sq.ft. ea.): **\$154.95**
*Coverages based on 2 coats



FACT: ALL RUSTSEAL COLORS ARE 100% NON-POROUS!

"The best part about KBS ... their Restoration Kits. Our customers love being able to purchase kits specifically designed for their projects and the kits even include detailed directions making it easy on the customer to get Expert Results!"
 - Mark D, Store Manager



TRUNK & FLOOR PAN REPAIR KIT

Trunk & Floor Pan Repair Kit: **\$126.95**

A terrific solution that fits your budget! Here's a **Professional Restoration Kit** that will save you \$\$\$ versus the cost of replacement. Restore your floor pan, trunk, or pickup truck bed back to new and never deal with rust again! Easy-to-follow detailed instructions included.

- Includes:**
- (1) Gal. KBS Klean (Step #1)
 - (1) Gal. RustBlast (Step #2)
 - (1) Qt. RustSeal (any color) (Step #3)
 - (1) lb. NuMetal Epoxy Putty (any color)
 - (1) Sq. yd. BackBone Reinforcing Mesh
 - (1) 8 oz. #1 Thinner
 - (1) Paint Spout & (4) Pairs Gloves
 - (1) Mask & (2) Brushes & (1) Stir Stick



View How-To's at KBS-COATINGS.COM

SYSTEM SAMPLER

Everything you need to get started & try out our **complete KBS system!** A full 1/2 pint of RustSeal will cover approx. 12 sq. ft. with 2 coats. Experience the quality & durability for yourself. A KBS best buy! Our complete system in one package!

System Sampler Kit: **\$22.95**
 Ultimate System Sampler Kit: **\$56.95**
**Includes Cavity Coater Aerosol & Cavity Wand*
 All-In-One System Sampler Kit: **\$54.95**
**Includes BlackTop 8oz (any sheen)*
 Large System Sampler Kit: **\$46.95**
**Includes Qt of RustBlast & Pt of RustSeal*

- Includes:**
- (1) 8oz. KBS Klean (Step #1)
 - (1) 8oz. RustBlast (Step #2)
 - (1) 8oz. RustSeal (any color) (Step #3)
 - (1) Pair Gloves
 - (2) Brushes & (1) Stir Stick



MOTORCYCLE FRAME COATER KIT

Motorcycle Frame Coater Kit: **\$54.95**

This complete Motorcycle Frame Paint Kit takes our popular System Sampler Kit to the next level. In addition to the complete **KBS 3-Step System**, this kit includes 8oz of BlackTop topcoat for a permanent final finish on your bike frame which withstands dulling and fading caused by prolonged sunlight exposure.

- Includes:**
- (1) 8oz. KBS Klean (Step #1)
 - (1) 8oz. RustBlast (Step #2)
 - (1) 8oz. RustSeal (any color) (Step #3)
 - (1) 8oz. BlackTop (gloss, OEM satin or flat)
 - (1) 8oz. #1 Thinner & (1) Pair Gloves
 - (2) Brushes & (2) Stir Sticks



FRAME COATER KIT

Our quart size 3-Step System kit includes enough products to Klean, Blast & Seal a full-size car or truck frame, or any 50 sq. ft. area with 2 coats of paint coverage. **Top quality protection** at a tremendous value! Detailed instructions included.

Frame Coater Kit: **\$64.95**
 Large Frame Coater Kit: **\$113.95**
**Includes 1 Gal RustBlast & 2 Quarts RustSeal*
 Ultimate Frame Coater Kit: **\$98.95**
**Includes Cavity Coater Aerosol & Cavity Wand*

- Includes:**
- (1) Qt. KBS Klean (Step #1)
 - (1) Qt. RustBlast (Step #2)
 - (1) Qt. RustSeal (any color) (Step #3)
 - (1) Pair Gloves
 - (2) Brushes & (1) Stir Sticks



ALL-IN-ONE CHASSIS COATER KIT

This complete kit takes our popular Frame Coater Kit to the next level. In addition to the complete **KBS 3-Step System**, this kit includes a pint of BlackTop topcoat for a permanent final finish which withstands dulling and fading caused by prolonged sunlight exposure.

All-In-One Chassis Coater Kit: **\$92.95**
 Large All-In-One Chassis Coater Kit: **\$149.95**
**Includes Qt of #1 Thinner, 2 Qts of RustSeal & 1 Qt of BlackTop*
 Ultimate All-In-One Chassis Coater Kit: **\$125.95**
**Includes Cavity Coater Aerosol & Cavity Wand*

- Includes:**
- (1) Qt. KBS Klean (Step #1)
 - (1) Qt. RustBlast (Step #2)
 - (1) Qt. RustSeal (any color) (Step #3)
 - (1) Pt. BlackTop (gloss, OEM satin or flat)
 - (1) 8oz. #1 Thinner & (1) Pair Gloves
 - (2) Brushes & (2) Stir Sticks



WHICH KBS RUSTSEAL KIT SHOULD I GET?

Kit Name	Includes Surface Prep Products	Coverage (2 Coat Coverage)	Includes Top Coat	Includes Inside Out Rust Protection	Includes Gloves & Brushes	Includes NuMetal Epoxy Putty
System Sampler Kit	Yes	12.5 sq ft	No	No	Yes	No
Ultimate System Sampler Kit	Yes	12.5 sq ft	No	Yes	Yes	No
All-In-One System Sampler Kit	Yes	12.5 sq ft	Yes	No	Yes	No
Large System Sampler Kit	Yes	25 sq ft	No	No	Yes	No
Frame Coater Kit	Yes	50 sq ft	No	No	Yes	No
Ultimate Frame Coater Kit	Yes	50 sq ft	No	Yes	Yes	No
All-In-One Chassis Coater Kit	Yes	50 sq ft	Yes	No	Yes	No
Large Frame Coater Kit	Yes	100 sq ft	No	No	Yes	No
Large All-In-One Chassis Coater Kit	Yes	100 sq ft	Yes	No	Yes	No
Motorcycle Frame Coater Kit	Yes	12.5 sq ft	No	No	Yes	No
Trunk & Floorpan Repair Kit	Yes	50 sq ft	No	No	Yes	Yes

CAVITY COATER

THE ULTIMATE CAVITY WAX

Cavity Coater is a one-step, super-penetrating corrosion inhibiting coating (CIC) for long term protection on all metal surfaces and is ideal specifically for areas that can't be prepped.

Cavity Coater gives long lasting protection for those hard to reach enclosed cavities such as rocker panels, boxed frames, inside doors & fenders, deck lids, tailgates...and more.

APPLICATIONS:

Automotive: Boxed frames • Rocker panels • Inside doors
Inside car & trailer • Frame rails • Windshield cowls • Trunk lids • Hoods • Inside A-Posts • Inside B-Posts • Inside tailgates • Inside front & rear fenders
Back sides of bumpers • Weld seams

Anti-Seize/Anti-Corrosion: Nuts, bolts & screws • Shafts
Pipe fittings • Gaskets • Press fit assemblies
Valve assemblies • Taps & drills • Pump mountings • Packing glands • Chain drives • Metal fittings • Machinery

FEATURES:

- ▶ 4000+ Hours Salt Spray
- ▶ Creeps into Welds & Seams
- ▶ Wicks & penetrates where primers and topcoats cannot
- ▶ Water Displacing & Self Healing
- ▶ Forms Capillary Action
- ▶ Lubricating properties
- ▶ Protects against carbon fusion

Cavity Coater (Aerosol): **\$24.95**
Aerosol w/36" Cavity Wand: **\$34.95**
Cavity Coater (Quart): **\$34.95**
Cavity Coater (Gallon): **\$99.95**
Cavity Wand (36" w/360° Tip): **\$13.95**



360° Tip for Complete Coverage

36" CAVITY WAND WITH 360° SPRAY TIP

Aerosol: **\$24.95**
Pint: **\$29.95**
Quart: **\$44.95**
Gallon: **\$144.95**
5 Gallon: **\$589.95**



FEATURES

- ▶ Promotes adhesion to almost anything
- ▶ Direct to metal
- ▶ Surface primer before bedliners
- ▶ Primer before using non-direct to metal coatings
- ▶ Bonds to fully cured RustSeal
- ▶ Ready to topcoat in an hour

Note: Not a high build primer

FUSION SEP

FUSION SELF-ETCHING PRIMER

Looking for a **FAST** drying and easy-to-apply primer that allows you to quickly topcoat RustSeal or any other base coats? We have exactly what you need...**FUSION Self Etching Primer!**

This all-purpose self-etching primer is ideal for promoting adhesion between multiple surface coatings, including applications of topcoats & primers or over fully cured **RustSeal**. **Fusion** is also excellent for priming bare metals such as steel, brass, aluminum and most hard plastics.

Can be sprayed or brushed on almost any painted surface and is ready for a topcoat in an hour. **Fusion** is available in a convenient aerosol as well as pints, quarts & gallons.

Satisfaction guaranteed!

BLACKTOP CHASSIS COATER



APPLICATIONS:

Automotive & Truck Chassis • Industrial Machinery
Engine Compartments • Suspension Components
Floor Pans & Trunks • Wheels & Rims
Wrought Iron Railings • Fire Escapes

BLACKTOP CHASSIS PAINT

BlackTop is a tough, moisture-cured, UV stable coating primarily used for top coating surfaces previously sealed with RustSeal or any other paint/primer application. **BlackTop** is a high performance protective coating specifically formulated to withstand dulling and fading caused by prolonged sunlight exposure. **BlackTop** may be used alone as a resilient coating but it will not offer the ultimate rust protection unless it is used in combination with RustSeal.

For the best rust protection & ultraviolet protection, first apply RustSeal to permanently seal the surface and then topcoat with **BlackTop** for an incredibly tough and professional looking finish. **BlackTop** dries to a rock hard yet flexible coating that can be readily applied to chassis, coil springs and light weight panels. **BlackTop** also has high heat resistance and can be applied to almost all automotive applications except exhaust systems. **Satisfaction Guaranteed!**

FEATURES:

- ▶ Single component formula
- ▶ Permanent UV stability
- ▶ No chalking or fading
- ▶ Rock hard permanent topcoat
- ▶ Flexible coating which expands & contracts
- ▶ High temp resistance
- ▶ Non-porous coating
- ▶ Superior flow & leveling
- ▶ Apply by brush or sprayer

Aerosol: **\$22.95**
8oz: **\$21.95**
Pint: **\$29.95**
Quart: **\$47.95**
Gallon: **\$179.95**
5 Gallon: **\$699.95**



*Available in Gloss, OEM Satin & Flat Finishes.

KBS MAXX

APPLICATIONS:
 Cars • Motorcycles • Wheels • Bicycles
 Commercial Vehicles • Snow Plows
 Fleet and Municipal Vehicles
 Tractors • Agricultural Equipment
 Construction Machinery • Trains
 Boats & Yachts • Personal Watercraft
 Woodwork • Tools • Doors • Aerospace

HIGH PERFORMANCE, ULTRA DURABLE, HIGH SOLIDS, LOW VOC, LOW HAPS, 2K TOPCOAT

KBS MAXX is a superior performance, two-component, low VOC, low HAPs polyurethane topcoat. Specifically designed for the automotive, agricultural, fleet refinishing, marine, and heavy industrial equipment markets.

KBS MAXX offers excellent gloss and color retention as well as superior impact resistance, while providing fast drying characteristics. An excellent coating for the OEM marketplace looking to provide an automotive quality look and finish in a single stage, two-component system.

FEATURES:

- ▶ MAXXimum Gloss Retention
- ▶ MAXXimum Color Retention
- ▶ MAXXimum Impact Resistance
- ▶ MAXXimum Weather Resistance
- ▶ Chemical Resistant
- ▶ Outstanding Adhesion
- ▶ Superb Opacity
- ▶ Excellent Flow
- ▶ Fast Drying
- ▶ Single Stage
- ▶ Custom Colors Available

Quart: \$59.⁹⁵
 Gallon: \$199.⁹⁵
 5 Gal Pail: \$899.⁹⁵
 *Includes Activator



KBS 2K CLEAR COAT

Available in High Gloss, Satin, and Flat!

MAXX CLEAR

STOCK COLORS (Custom Colors Available)

ARCTIC WHITE	SCHOOL BUS YELLOW	DAYTONA YELLOW	SILVER METALLIC (SATIN)	SILVER METALLIC (HIGH GLOSS)	SMOKE GREY
SUBLIME GREEN	JOHN DEERE GREEN	JOHN DEERE AG YELLOW	JOHN DEERE INDUSTRIAL YELLOW	ORANGE GLOW	
INFRA RED	BLUE MAYHEM	CRAZY PLUM (METALLIC)	HOT ROD BLACK (LOW GLOSS)	PITCH BLACK (HIGH GLOSS)	

*Due to print variations, colors are not exact.

KBS TOP COATER

APPLICATIONS:
 Cars • Motorcycles • Wheels • Bicycles
 Commercial Vehicles • Snow Plows
 Fleet and Municipal Vehicles
 Tractors • Agricultural Equipment
 Construction Machinery • Trains
 Boats & Yachts • Personal Watercraft
 Tools • Doors

ULTRA HIGH PERFORMANCE AEROSOL TOP COAT

Maximum Coverage and Professional Looking Results!

KBS Top Coater is a superior spray paint formulated for maximum coverage and professional looking results. KBS Top Coater is an ideal top coat paint for RustSeal when the area will be consistently exposed to sunlight.

KBS Top Coater is a very high solids paint does not run or sag, and gives at least twice the coverage of conventional spray paints. KBS Top Coater can be applied to bare metal, but for ultimate performance, apply KBS Top Coater over RustSeal.

Auto, Farm & Equipment

STAINLESS STEEL	SCHOOL BUS YELLOW	CASE POWER TAN	NEW DEERE GREEN	NEW DEERE YELLOW	12oz: \$19. ⁹⁵ 16oz: \$21. ⁹⁵
FORD BLUE	CLASSIC DEERE GREEN	IHC RED	EQUIPMENT NEW YELLOW	EQUIPMENT OLD YELLOW	ALLIS CHALMERS ORANGE
WHITE (FLAT)	WHITE (GLOSS)	ALUMINUM	MEDIUM GREY	DARK GREY	LIGHT GREY
LIFT TRUCK BLUE	LIFT TRUCK ORANGE	DEEP BLUE	SAFETY COLORS		
			SAFETY GREEN	SAFETY YELLOW	SAFETY ORANGE
			SAFETY BLUE	SAFETY RED	
Camo Colors			PRIMERS		
FLAT BLACK CAMO	GREEN CAMO	DESERT TAN CAMO	BROWN CAMO	IRON OXIDE RED	LIGHT GREY PRIMER
ALL NEW!			Camo 4 Pack: \$69. ⁹⁵ *Includes All 4 Camo Colors in 12oz Aerosol Cans		



ULTRA HIGH PERFORMANCE BRUSH, ROLL OR SPRAY TOP COAT

Quart: \$47.⁹⁵
 Gallon: \$179.⁹⁵



KBS Top Coater is a superior coating formulated to be brushed, rolled or sprayed offering maximum coverage and professional looking results. KBS Top Coater is an ideal top coat paint for RustSeal when the area will be consistently exposed to sunlight. KBS Top Coater is a very high solids paint that does not run or sag, and gives at least twice the coverage of conventional paints.

Camo Colors

FLAT BLACK CAMO	GREEN CAMO	DESERT TAN CAMO	BROWN CAMO
-----------------	------------	-----------------	------------

PRIMERS

IRON OXIDE RED	LIGHT GREY PRIMER
----------------	-------------------

SAFETY COLORS

SAFETY GREEN	SAFETY YELLOW	SAFETY ORANGE
SAFETY BLUE	SAFETY RED	

Auto, Farm & Equipment

LIGHT GREY	MEDIUM GREY	BATTLESHIP GREY
WHITE (GLOSS)	FOREST GREEN	FIRE RED





APPLICATIONS:
Concrete • Porcelain • Polished Chrome
Copper • Aluminum • Plastic

IDEAL FOR:
Protecting Pre-existing coatings
Aluminum fitting and parts • Graffiti proofing
Aluminum wheels and fuel-tanks
Automotive Finish Protection

DIAMONDFINISH CLEAR

DiamondFinish Clear is a long lasting, moisture cured top coat, designed to add body, depth and rich gloss to any existing top coat.

Guaranteed never to yellow or crack, **DiamondFinish Clear** can also be used as a standalone sealant for high weather areas such as wood, concrete, porcelain or on bare metals like polished chrome or aluminum.

DiamondFinish Clear is very durable due to its high solids content, but it will also remain permanently flexible. It can be applied by brush, roller or conventional spray gun, and will always have excellent flow out.

Unlike other clear coats, all of the hardening components are already contained in **DiamondFinish Clear**, so there is no measuring and no mixing.



Aerosol: **\$19.95**
4oz: **\$19.95**
Pint: **\$38.95**
Quart: **\$56.95**
Gallon: **\$193.95**
5 Gallon: **\$789.95**

FEATURES

- ▶ Over 60% Solids
- ▶ Direct-To-Metal Application
- ▶ Recoat in 1-2 hours
- ▶ Single Part Formula
- ▶ Tougher and Harder than 2 Part Clear Coats
- ▶ Simple Brush or Spray Application
- ▶ Self Leveling (No Brush Marks)
- ▶ Permanent UV Stability
- ▶ High Temperature resistance suitable for Motors and Brake Calipers
- ▶ Extreme Chemical Resistance against acids or any type of fuel
- ▶ Seals both Paints & Metals
- ▶ Seals Ferrous & Non-Ferrous Metals
- ▶ Graffiti Proof
- ▶ Aerosol Available in Gloss & Satin Sheens



HEADLIGHT RESTORE KIT



Headlight Restore Kit: **\$22.95**

A terrific solution for cloudy headlight lenses. This kit includes everything you need to restore 4 or more headlight lenses which drastically increases the visibility of fogged, yellowed, cloudy, or hazy dull looking headlights and drastically improves their performance. Easy-to-follow detailed instructions included.

- Includes:**
- (1) 8oz. KBS Klean
 - (1) 4oz. DiamondFinish Clear
 - (1) Pair Gloves & (1) Scuff Pad
 - (2) Brushes & (1) Stir Stick



APPLICATIONS:
Wheel Wells • Gas Tanks
Frames • Quarter Panels
Fenders • Undercarriages
Hoods • Decks • Floor Pans

WATERBASED & SOLVENT-BASED UNDERCOATINGS

KBS UnderCoat provides protection in wheel wells, gas tanks, frames, quarter panels, fenders, undercarriages, hoods, decks, and floor pans.

KBS UnderCoat produces a very tough, yet flexible film with excellent adhesion, and helps prevent road salt from eating away at your car's metal and fiberglass.

KBS UnderCoat offers excellent adhesion to metal or painted surfaces.

KBS UnderCoat provides economical paintable durability, plus moisture resistance & corrosion resistance, all in a matte black finish.

KBS UnderCoat also provides sound deadening by reducing road noise and vibration.

KBS UnderCoat is available in a Solvent-Based Rubberized (Aerosol & Bulk), Solvent-Based Asphalt, and Waterbased Asphalt!

FEATURES

- ▶ Paintable (Rubberized Formula)
- ▶ Sound Deadening
- ▶ Chip resistant
- ▶ Corrosion protection
- ▶ Easy to apply
- ▶ Excellent adhesion to bare metal & painted surfaces
- ▶ Quick Drying (Solvent Formula)
- ▶ VOC Friendly (Waterbased Formula)
- ▶ Uniform appearance
- ▶ Spray, Brush, or Roll

SOLVENT-BASED RUBBERIZED

WATERBASED ASPHALT



Quart: **\$19.95**
Gallon: **\$59.95**
5 Gal Pail: **\$249.95**



Aerosol: **\$9.95**
Quart: **\$19.95**
Gallon: **\$59.95**
5 Gal Pail: **\$249.95**

SOLVENT-BASED ASPHALT



Quart: **\$19.95**
Gallon: **\$59.95**
5 Gal Pail: **\$249.95**



MOTOR COATER ENGINE ENAMEL

ENGINE PAINT

Motor Coater is easy to apply, offers superb coverage and yields a self-leveling professional looking finish brushed or sprayed. Motor Coater provide deep, rich pigmented colors for excellent coverage.

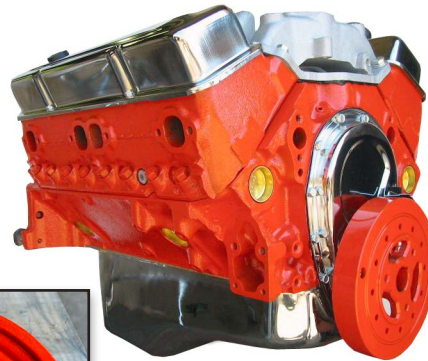
Your engine will be a show stopper at this DIY price...too bad it's kept under the hood!



Aerosol: \$22.95
Pint: \$25.95



Complete Kit: \$57.95



FEATURES

- ▶ Withstands temps up to 450° F
- ▶ Vibrant color & retention
- ▶ Oil & gas resistant
- ▶ Will not blister, flake, crack or peel
- ▶ Self-leveling: Brush or Spray
- ▶ Great for Brake Calipers Too!

Includes:

- (1) Qt. KBS Klean
- (1) Qt. RustBlast
- (1) Pt. Motor Coater
- (1) 8oz. #1 Thinner
- (1) Pair Black Gloves
- (1) Brush & Stir Stick

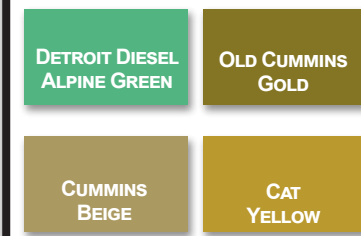


*Due to print variations, colors are not exact.



HEAVY DUTY MACHINERY COLORS NOW AVAILABLE!

Quart: \$46.95



APPLICATIONS:

- Engines • Manifolds • Mufflers • Headers
- Stoves • Stove pipe • Heaters or Furnaces • Kilns
- Ovens • Compressors • Turbines • Piping
- Process vessels • Heat exchangers
- Free Standing Fire Place • BBQ Grill

XTC - XTREME TEMPERATURE COATING

KBS Coatings is pleased to introduce XTC - Xtreme Temperature Coating formulated to the same industrial maintenance strength you've come to expect from KBS.

Offered in TEN COLORS, XTC is a great choice for Headers and Exhaust Manifolds or any high temperature part. XTC is rated to an industry leading 1500°F/812°C. With the added thermal shock resistance, you'll get repeated cycles of heating and cooling without any loss of finish.

If you're looking for the ultimate in Rust Protection, combine XTC over the XTC Zinc Primer!



FEATURES

- ▶ Easy to apply
- ▶ Guaranteed not to burn off
- ▶ Withstands continuous temps up to 1500° F/816° C
- ▶ Will not peel, flake or chalk
- ▶ Combine with XTC Zinc Primer for insane rust protection
- ▶ Outstanding resistance to thermal shock
- ▶ Reduces underhood temperatures & reduces exhaust manifold surface temperatures
- ▶ Improve exhaust gas velocity which increases Horse Power
- ▶ 8oz can typically covers up to 3 sets of manifolds

*Quart Kits & Gallons Kits Not Shown

Size	Jet Black, Cast Iron Grey Charcoal Metallic Off-White, Clear & Flame Blue	Aluminum Pure White Rocket Red Stainless Steel Pontiac Met Blue
Aerosol	\$19.95	\$19.95
8oz	\$19.95	\$26.95
Pint	\$30.95	\$39.95
Quart	\$55.95	\$74.95
Gallon	\$179.95	\$249.95
5 Gallon	\$765.95	\$995.95

Size	XTC Silicone Zinc Primer
Aerosol	\$19.95
Quart Kit	\$109.95
Gallon Kit	\$389.95

GOLD STANDARD TANK SEALER

GOLD STANDARD TANK SEALER

KBS Coatings manufactures the most respected and trusted gas tank sealer in the industry today! Not only do we think of it as the NEW gold standard of sealers but we named it so!

Gold Standard Tank Sealer is a superior, single component, ready-to-use sealer formulated for coating the inside of metal, aluminum & fiberglass tanks.

Widely recommended & easy-to-use, this single application coating cures into a tough fuel impervious seal. The entire tank including pinholes & weld seams are permanently sealed to prevent the return of rust, corrosion & clogged carburetors. Yet amazingly, this rock hard interior remains flexible to withstand vibration and the repeated expansion & contraction of the tank! Other sealers are little more than paint or adhesive-type coatings which have poor sealing abilities especially when exposed to today's fuels.

Wisely choose Gold Standard for an incredible long lasting seal! Satisfaction Guaranteed!

FEATURES

- ▶ Silver metallic permanent coating
- ▶ Eliminates all rust & corrosion
- ▶ Impervious to all fuels, alcohol additives & most solvents
- ▶ Permanently seals pinholes & weld seams
- ▶ Flexible to expand & contract
- ▶ Non-flammable
- ▶ Environmentally safe
- ▶ Contains no Methyl Ethyl Ketone



View Instructional Videos at www.KBS-COATINGS.com

APPLICATIONS:
Steel, Aluminum & Fiberglass Fuel Tanks
Oil Tanks • Utility Tanks • Diesel Tanks
Non-Potable Water Tanks



8oz: \$13.95
Pint: \$24.95
Quart: \$39.95
Gallon: \$114.95
5 Gallon: \$487.95

FUEL TANK SEALER KIT

Complete Kit: \$69.95

The Auto Fuel Tank Sealer Kit contains everything you need to clean, prep & permanently seal up to 25 gallon tank. Detailed instructions included. Satisfaction guaranteed!

- Includes:**
- (2) Qts KBS Klean (Step #1)
 - (1) Qt RustBlast (Step #2)
 - (1) Qt Tank Sealer (Step #3)
 - (1) Pair Gloves & (1) Stir Stick



LARGE CYCLE TANK SEALER KIT

Complete Kit: \$48.95

Larger version of our 3-Step cost savings tank kit for the repair of motorcycles, generators, lawn mowers, tractors, snowmobiles, or other small tanks up to 12 gallons. Detailed instructions included. **Satisfaction guaranteed!**

- Includes:**
- (1) Qt KBS Klean (Step #1)
 - (1) Qt RustBlast (Step #2)
 - (1) Pt Tank Sealer (Step #3)
 - (1) Pre-cut Piece of BackBone Mesh
 - (1) Pair Gloves & (1) Brush & (1) Stir Stick



CYCLE TANK SEALER KIT

"I tried this product myself ... WORKED GREAT!!!!"
-Dave Stewart, Product Specialist for JP Cycles

Complete Kit: \$43.95

A great 3-Step cost savings kit designed for the repair of motorcycles, generators, lawn mowers, tractors, snowmobiles, or other small tanks up to 5 gallons. Detailed instructions included. **Satisfaction guaranteed!**

- Includes:**
- (1) Qt KBS Klean (Step #1)
 - (1) Qt RustBlast (Step #2)
 - (1) 8oz Tank Sealer (Step #3)
 - (1) Pre-cut Piece of BackBone Mesh
 - (1) Pair Gloves & (1) Brush & (1) Stir Stick



WORKING ON A TANK WITH A PREVIOUS LINER?

When that other brand sealant fails and you need to get back on track, get yourself a **PLUS** kit, which contains everything our normal cycle kits would **PLUS** a quart of KBS Strip (pg 16) our industrial strength aircraft stripper, to quickly remove failed sealers.

Cycle Tank Sealer **PLUS** Kit: \$53.95
Large Cycle Tank Sealer **PLUS** Kit: \$58.95



PLUS
includes a
Quart of Strip

STRIP PAINT REMOVER

SURFACES:
Furniture • Woodwork • Machinery • Masonry
Antiques • Floors • Cars & Boats • Graffiti

AIRCRAFT STRENGTH ... STARTS WORKING IMMEDIATELY!

KBS Strip is a heavy-duty paint, stain & varnish remover developed for use on wood, metal & masonry surfaces. This penetrating semi-gel formula clings to vertical surfaces like magic & removes even your toughest finishes fast & easy! The spray bottle applicator promotes even sealing coverage & deep penetrating power for removing stubborn layers of finishes even in hard to reach places! Another advantage of **Strip** is that it contains an evaporation sealant which drastically lowers the amount of odor. **Strip** can be easily washed off with water or solvent without leaving a residue.

ADVANTAGES:

- ▶ Gels when sprayed – clings to vertical surfaces
- ▶ Very low odor – contains evaporation sealant
- ▶ Safe for all woods and metals – leaves no residue
- ▶ Will not raise wood grain or harm patina

Quart: **\$18.⁹⁵**
Gallon: **\$44.⁹⁵**
(includes Bottle & Sprayer)



“Tried many other products to strip paint from a 1967 VW beetle. This was the only thing that actually worked.”
-Misty K from Simi Valley, CA

REMOVES:

- ▶ Lead-based paints
- ▶ Polyurethanes
- ▶ Lacquers
- ▶ Shellacs
- ▶ Marine Finishes
- ▶ Tile & Carpet Adhesives
- ▶ Epoxies
- ▶ Latex
- ▶ Stains
- ▶ Varnishes
- ▶ Acrylics

NUMETAL EPOXY PUTTY

3.5oz: **\$8.⁹⁵**
1 lb: **\$24.⁹⁵**

NuMetal Epoxy Putty is an easy-to-use, two-part putty that mixes like clay but hardens like steel! **NuMetal** bonds, seals, fills, insulates, anchors, caulks and waterproofs. It cures without shrinking or sagging and can be drilled, tapped, sanded, primed and painted. **NuMetal** will not only stick to damp surfaces, but it will cure underwater!

FEATURES

- ▶ Bonds to almost anything
- ▶ Cures underwater
- ▶ Won't shrink or sag
- ▶ Can be applied to vertical surfaces
- ▶ Sand, drill or carve
- ▶ Paint, stain or gel coat
- ▶ Withstands temps up to 300°F (150°C)
- ▶ Easy 1:1 mix ratio
- ▶ Cut only what you need
- ▶ Soap & water clean up



APPLICATIONS:

All Metals • Wood • Ceramic • Porcelain PVC • ABS Pipe
Brick • Stone • Leaky Gas Tanks • Broken Fuel Lines
Steering Wheels • Manifolds • Plastic Parts/Knobs
Cracked Fiberglass • Marine Repairs • Pool Repairs
Insulate • Repair Holes in Decks or Tiles
Use like Modeling Clay • Carvings • Concrete Plaster
Tile Grout • Tool Handles



INCLUDES: A & B bars, gloves & instructions.

KBS BED RENU

APPLICATIONS:

Cars • Trucks • Commercial Vehicles
Fleet & Municipal Vehicles • Tractors
Agricultural Equipment
Construction Machinery

KBS BED LINER

APPLICATIONS:

Cars • Trucks • Commercial Vehicles
Fleet & Municipal Vehicles • Tractors
Agricultural Equipment
Construction Machinery

EASY TOUCH UP WHERE YOUR BEDLINER HAS WORN AWAY OR NEEDS "RENU'D"

KBS Bed Renu is a tough and flexible thick black protective coating designed to touch up areas where your bedliner has worn away or needs "Renu'd".

Aerosol: **\$12.⁹⁵**
Pack of 3 Aerosols: **\$29.⁹⁵**

KBS Bed Renu protects against corrosion and abrasion while withstanding impacts and improving traction.

KBS Bed Renu features fast cure and excellent adhesion also extending the life of your vehicle.

KBS Bed Renu should coat up to 30 sq. ft.



FEATURES:

- ▶ Easy, Convenient Aerosol Application
- ▶ Excellent UV Stability
- ▶ Crazy Tough and Scratch Resistant
- ▶ Chip Resistant
- ▶ Durable, Long-Lasting Finish that Resists Nicks and Scratches

EXCELLENT ADHESION, DURABLE EXTENDING THE LIFE OF YOUR VEHICLE

KBS Bed Liner is a tough and flexible thick black protective coating designed to protect against corrosion and abrasion while withstanding impacts & improving traction. **KBS Bed Liner** features excellent adhesion and extends the life of your vehicle.

KBS Bed Liner should coat up to 250 sq. ft.



FEATURES:

- ▶ Easy, Convenient Roll, Brush or Spray Application
- ▶ Excellent UV Stability
- ▶ Crazy Tough and Scratch Resistant
- ▶ Provides Superb Traction & Chip Resistant

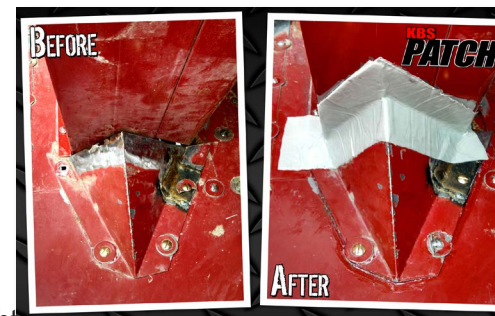
Gallon: **\$89.⁹⁵**

KBS PATCH

EASY-TO-USE, UV/SUNLIGHT ACTIVATED REPAIR PATCH

KBS Patch is an easy-to-use, UV/sunlight activated repair patch. The fiberglass-reinforced polyester patch creates long-lasting repairs.

KBS Patch is perfect for making watertight, durable repairs on engine parts, decking, fenders, gas cans, drain pipes, water tanks, PVC pipes, plastics, Plexiglas, fiberglass, metal, wood, concrete and more.



3"x6": **\$17.⁹⁵**
6"x9": **\$29.⁹⁵**
9"x12": **\$42.⁹⁵**



CURES KBS PATCH WHEN SUNLIGHT IS NOT PRACTICAL!
\$16.⁹⁵



EASY TO USE!

Surface should be cleaned, dry and free of any contaminants.



Cut KBS Patch into any size you want without exposing to UV or sunlight.



Remove white backing tape to expose the sticky resin.



Apply KBS Patch to repair area with sticky side down.



Press firmly to repair surface.



Remove transparent film backing and expose to sunlight or KBS UV Light. Curing times depend on UV intensity between 5 minutes (sunny) and 50 minutes (cloudy).

Drill, sand, and/or paint when cured.

KBS PAINT SAVER

PROVEN PAINT PRESERVER

KBS Paint Saver is a proven paint preserver that allows user-friendly long term storing of leftover paints in the original can.

KBS Paint Saver keeps paints, coatings, and clear coats from skinning over in the can which saves you money by allowing you to use the entire can of paint.

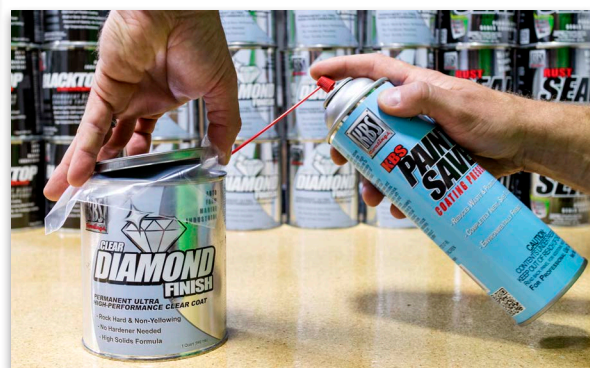
KBS Paint Saver is environmentally safe, allows for storage of paints in their original cans, and is very easy to use.

Aerosol: **\$10.⁹⁵**
Pack of 3 Aerosols: **\$24.⁹⁵**



FEATURES:

- ▶ Isolates Air in Can from Contents
- ▶ Environmentally Safe
- ▶ Non-Flammable
- ▶ Saves \$\$\$ on Wasted Paints
- ▶ Saves Up to 75 Cans of Paint



KBS RUST CONVERTER

KBS Rust Converter easily converts a rusty surface into a black, inert primed surface that is ready for paint and compatible with most topcoats and also protects against future rust.

While the most permanent solution for rust prevention is the KBS 3-Step System of KBS Klean, RustBlast and RustSeal, KBS Rust Converter can be used when you are unable to use the KBS 3-Step System.

Aerosol: **\$12.⁹⁵**
Pack of 3 Aerosols: **\$29.⁹⁵**



APPLICATIONS:

Cars • Motorcycles • Wheels
Commercial Vehicles • Snow Plows
Fleet and Municipal Vehicles • Tractors
Agricultural Equipment
Construction Machinery • Tools

FEATURES:

- ▶ Easy, Convenient Aerosol Application
- ▶ For Use on Rusted Surfaces
- ▶ Easily Transforms Rust
- ▶ Creates Primed Surfaces
- ▶ Fast Drying

SEMPERFORCE BLACK NITRILE GLOVES

SemperForce black nitrile examination gloves are designed for demanding work environments where your safety and comfort are a must. A textured surface promises secure gripping capabilities. SemperForce black nitrile gloves are ideal for automotive, industrial, tattoo, and cosmetology applications.

FEATURES

- ▶ Highest tensile strength (21 mpa) of any nitrile glove we've ever offered! **VERY TEAR RESISTANT!**
- ▶ Textured fingertips - Enhanced dexterity and gripping capabilities
- ▶ Forms to your hand to allow full range of motion
- ▶ High puncture resistance
- ▶ Value Priced!



BEST FOR

- ▶ General shop use
- ▶ Auto Detailing, Painting, Mechanics, Oil Changes
- ▶ Auto Restoration, Brake Service Centers
- ▶ Tattoos

BOX (50PR.)	CASE (10 BOXES)
\$8. ⁹⁵	\$84. ⁹⁵

*Available in S, M, L, XL & 2XL

BLACK LIGHTNING DISPOSABLE GLOVES

Black Lightning Gloves provide superior protection with durability, now with breakthrough 5.5 pH Technology! Made to match healthy skin's natural 5.5 pH levels to ensure the MOST comfortable fit, for extended wear times.



FEATURES

- ▶ Made from 100% powder free Nitrile
- ▶ Unique formulation reduces excess perspiration
- ▶ Textured fingertips for precision handling
- ▶ High chemical resistance
- ▶ High puncture resistance

10 PR.	BOX (50PR.)	CASE (10 BOXES)
\$4. ⁹⁵	\$16. ⁹⁵	\$133. ⁹⁵



*Available in S, M, L, XL & 2XL

BEST FOR

- ▶ General shop use
- ▶ Diesel, Gasoline, Kerosene, Ethanol, Xylene, Turpentine
- ▶ Thinner, Petroleum Distillates
- ▶ Most low evaporation high flash solvents

HIGH VISIBILITY SAFETY ORANGE NITRILE GLOVES



10 PR.	BOX (50 PR.)	CASE (10 BOXES)
\$4. ⁹⁵	\$16. ⁹⁵	\$133. ⁹⁵

*Available in S, M, L, XL & 2XL

RED LIGHTING DISPOSABLE GLOVES

FEATURES

- Fully Textured Tread Grip for superior grip in both wet and dry conditions.
- 6 mil thickness, Industrial Grade.
- High chemical and puncture resistance.
- Tape and labels do not stick to or tear gloves.
- Great for all KBS Coatings!



10 PR.	BOX (50 PR.)	CASE (10 BOXES)
\$4. ⁹⁵	\$16. ⁹⁵	\$133. ⁹⁵

BLUE LIGHTNING GLOVES ULTRA THICK 15 MIL LATEX GLOVES

FEATURES

- Ultra Thick 15 mil glove! At 4 times thicker than standard exam gloves, it provides the ultimate barrier protection.
- Reduced Latex Protein! Additionally processed to remove extra latex proteins from the glove, which may reduce risk of latex allergies.
- Extra Long 12 inch cuff for added protection!
- Approved for Medical Use
- Super strength
- Textured Fingertips, Smooth Palm.



*Available in M, L & XL

10 PR.	BOX (25 PR.)	CASE (10 BOXES)
\$6. ⁹⁵	\$16. ⁹⁵	\$144. ⁹⁵

WHITE LIGHTNING GLOVES

FEATURES

- Made from 100% Powder Free Latex.
- Textured fingertips for precision handling.
- High chemical resistance.
- High puncture resistance.
- Tapes & labels do not stick.
- Additionally processed to remove most latex proteins.
- Approved for Medical Use.



*Available in S, M, L & XL

10 PR.	BOX (50 PR.)	CASE (10 BOXES)
\$3. ⁹⁵	\$15. ⁹⁵	\$124. ⁹⁵

#1 THINNER

8oz: \$8.95
 Quart: \$15.95
 Gallon: \$39.95
 5 Gallon: \$189.95

The ideal VOC compliant solvent for thinning & clean-up of all KBS Coatings.



PRE-VAL

These handy little sprayers are perfect for getting **RustSeal** or **Blacktop** into those hard-to-get places. Each will spray up to a pint of paint. Remember to thin with **#1 Thinner**!



\$7.95
 (includes sprayer & paint jar)

PAINT SPOUTS

One size fits all! A reusable easy-to-clean flexible spout that fits pint, quart & gallon size cans. Now pour paint easily without a mess! Keeps can grooves paint free so lids reseal cleanly & tightly which is a good idea when pouring **RustSeal** or **BlackTop**!! A great gadget that can be used as a brush wiper too!



\$1.00 Each



\$10.95 Each

DRY AIR SPRAY GUN FILTERS

Never spray **RustSeal**, **BlackTop**, **KBS MAXX**, or **DiamondFinish** without this dry air filter. Not only does it absorb up to 1.0 fluid ounce of condensed moisture but it removes other trace contaminants like oil aerosols & dust particles which can occur in the hose downstream and affect your final finish. These disposable filters help prevent failures at the spray gun and operate @ 30cfm with almost no drop in pressure! Highly recommended even though your spraying system may be already equipped with moisture traps & filters.

BRUSHES

Quality brushes at a disposable price! Made with natural bristles for a superior paint pick up and a smooth uniform finish.



Qty	1/2"	1"	1 1/2"	2"	3"
6	\$4.80	\$5.70	\$6.60	\$7.80	\$11.70
12	\$9.60	\$11.40	\$13.20	\$15.60	\$23.40
24	\$19.20	\$22.80	\$26.40	\$31.20	\$46.80

BACKBONE REINFORCING MESH

\$6.95 / Sq. Yd.

A thin pliable reinforcing fiberglass mesh that lays flat to form an invisible patch made of unbeatable strength & holding power. Easy to use. No bunching, bulging or stiff loose hairs to ruin your finish. Use in conjunction with **RustSeal** or **NuMetal** to repair holes and bridge gaps in metal, wood or fiberglass. **Contains 1 sq. yd.**



KBS GEAR SHORT SLEEVE T-SHIRT

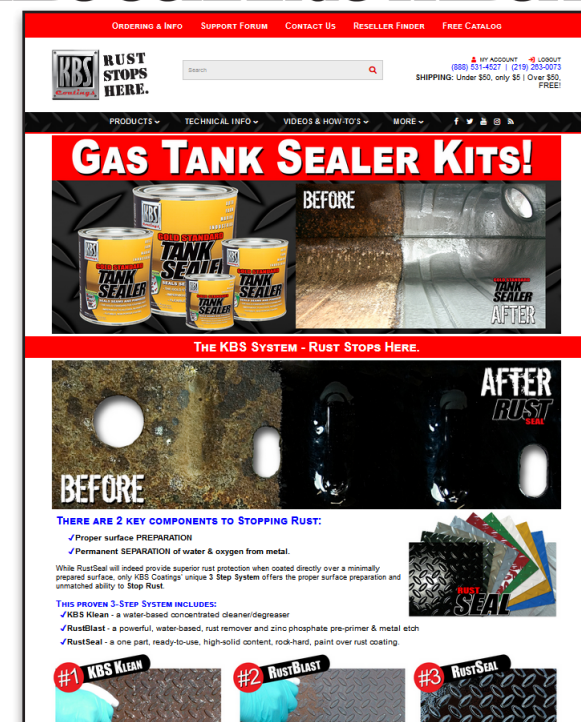
Due to demand by customers looking to express their KBS Pride, we announce our **KBS Gear T-Shirts**! Made of ultra comfortable 100% pre-shrunk cotton & available in popular colors. Each shirt proudly displays the KBS Logo and declares what all KBS users know ... **RUST STOPS HERE!** Sign up for our KBS e-mail list to be eligible for future promotions/rewards when you are seen wearing our KBS Gear.

\$6.95 Each



Don't forget, all KBS Products are available in 5 Gallon Pails, Drums, or case quantities at a significant discount. Perfect for private contractors or industrial workforce applications.

KBS COATINGS WEBSITE



VISIT US ONLINE AT KBS-COATINGS.COM:

- ▶ Get the Latest KBS News & Product Releases
- ▶ Responsive - Works on Computer Screens, Tablets & Phones!
- ▶ View & Print Complete Product Instructions
- ▶ Live Tech & Sales Chat
- ▶ Customer Reviews
- ▶ How-To Videos & Guides
- ▶ Secure & Safe Online Ordering
- ▶ Before & After Project Photos
- ▶ Easy Find Your Local Reseller
- ▶ Tech Support Forum



KBS COATINGS - RUST STOPS HERE.

1101 Cumberland Xing #180
Valparaiso, IN 46383

Phone Order: 1-877-548-9323

Phone Order: 1-219-263-0073

Order Online: KBS-COATINGS.COM

Order by Fax: 1-877-235-0590



We reserve the right to change our prices without prior notice.